

The Waterfront Vancouver PARKING CENTER

5,830 SF RETAIL
FOR LEASE

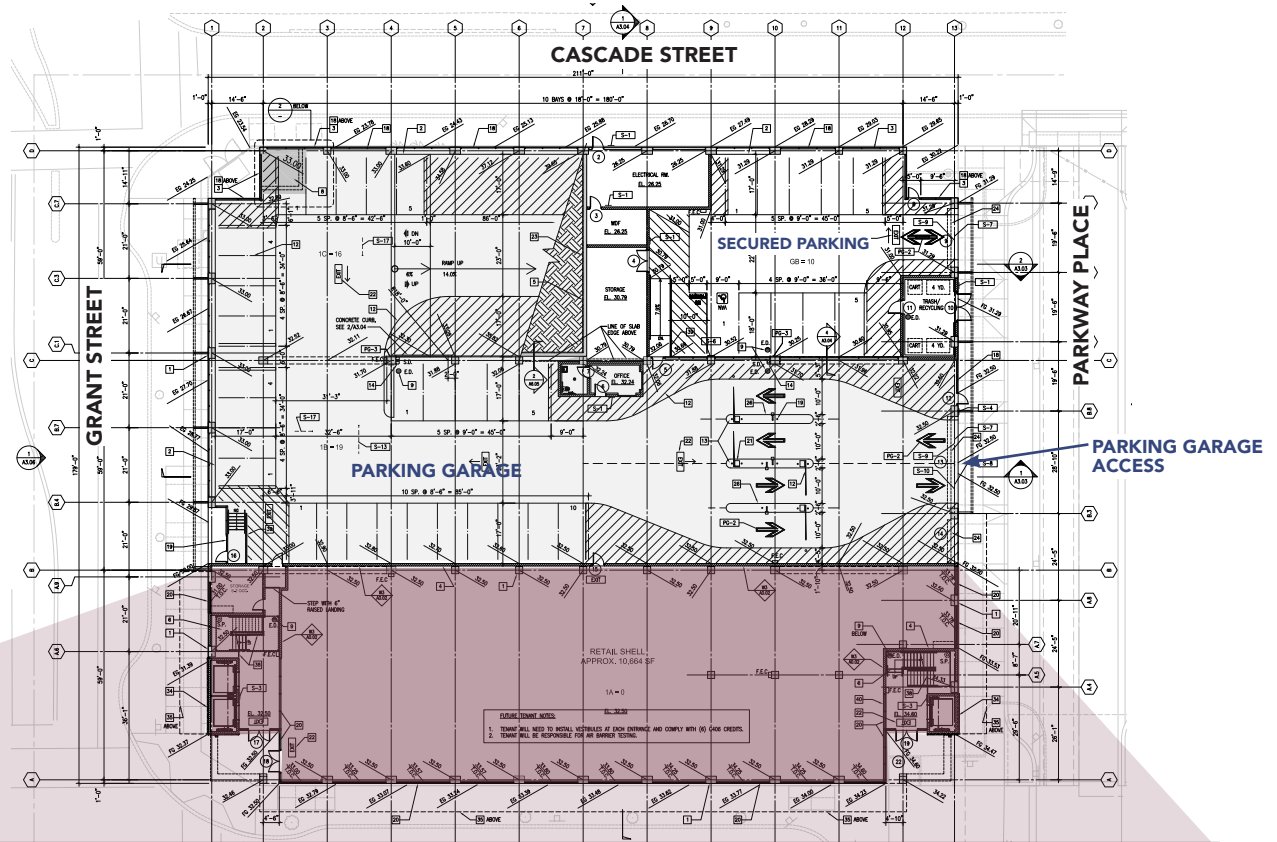
COMING SOON!
WHITE BIRCH
design co.
— and —
CANTONG CAFÉ



DETAILS

THE WATERFRONT VANCOUVER PARKING CENTER

- 5,830 SF available, retail suites can be configured to accommodate multiple retail footprints.
- The Waterfront Vancouver Parking Center (Block 7) is across from the Riverwest Apartments, 206 apartment homes and the Rediviva Apartments, 63 apartment homes.
- Retailers in the immediate area include El Gaucho, Wildfin, Grassa, Orangetheory, Willamette Valley Vineyards, OnPoint, Dos Alas, Maryhill Winery, Twigs.



AREA FACTS



DAYTIME RENDERING

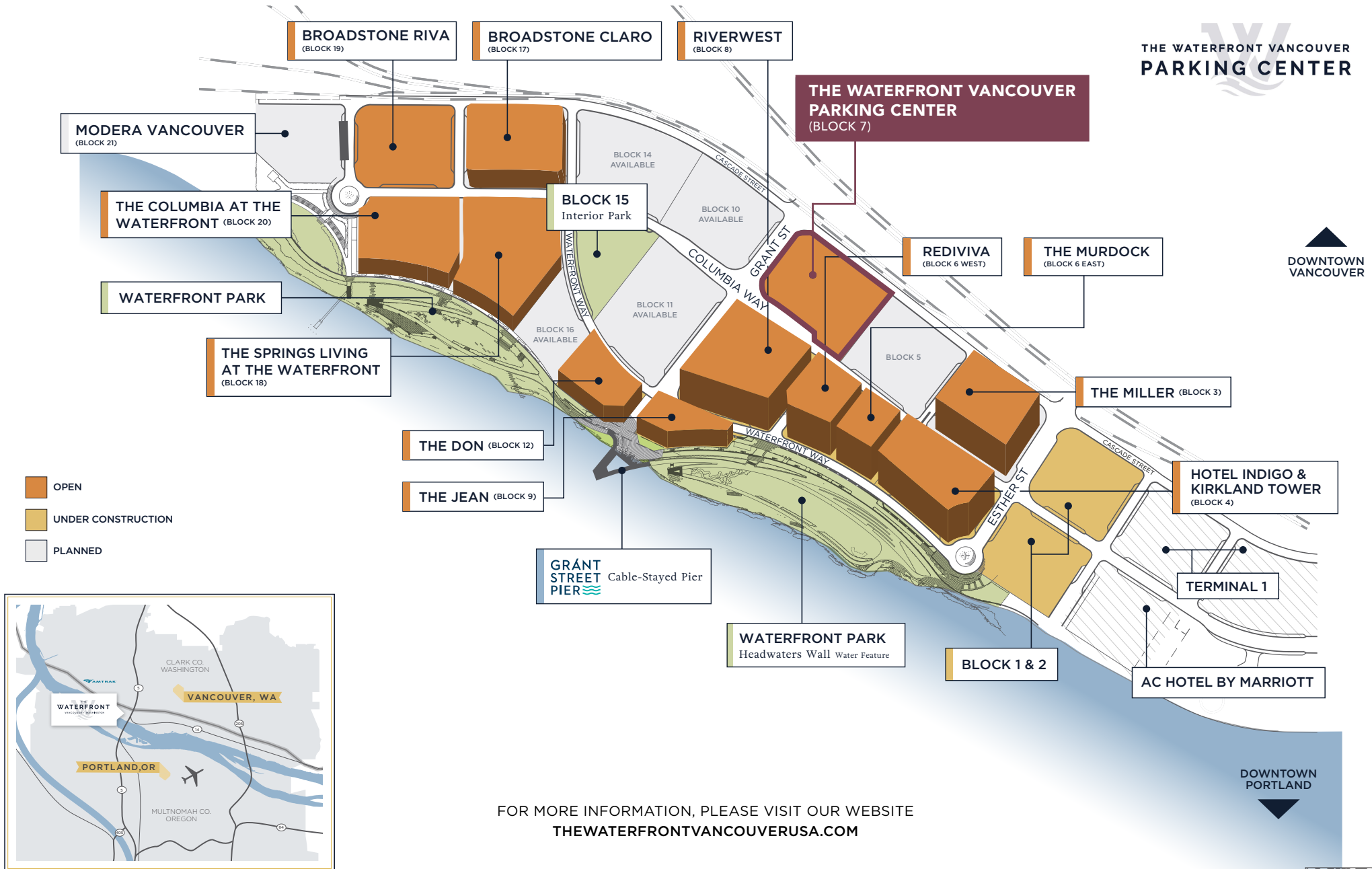


NIGHTTIME RENDERING

- With 16 city blocks developed, under construction, in planning and \$1.6 billion in direct investment already complete, including a ½ mile waterfront park overlooking the majestic Columbia River, The Waterfront represents the largest residential and commercial development underway in the tri-county region and provides the region with a true world-class destination for shopping, dining and entertainment.
- By 2025, The Waterfront will encompass 2,200 residential units, 600,000 SF of Class A office, 150,000 SF of retail and 288 luxury hotel rooms. When complete, The Waterfront will encompass 20 city blocks over 2.8 million square feet of land, with \$2.6 billion in direct investment.
- Between dollars brought in by hotel guests, residents in the apartments and the potential condominiums, and the soon-to-be-open senior living tower, annual purchasing power of local dwellers is estimated at \$124.5 million annually and growing by 2024.
- Its popularity among residents, visitors, office workers, hotel guests, shoppers and diners has exploded into a new opportunity as The Waterfront Vancouver Parking Center opened in 2024. Facing Columbia Street, north of Parkway Place, the new 8-story garage features 829 spaces, with 10% – 83 spaces – allocated for electric vehicle charging stations. It has three elevators with 10,500 square feet of ground-floor retail space slated for the next wave of high-end retail, restaurants and neighborhood services looking to locate in one of most unique locations in the region.

LOCATION & BLOCK STATUS

THE WATERFRONT VANCOUVER PARKING CENTER



SURROUNDING RETAIL



THE WATERFRONT

THE WATERFRONT VANCOUVER PARKING CENTER

WASHINGTON OREGON

Vancouver Upper Turning Basin

WATERFRONT RETAIL

PROPOSED MIXED-USE

THE MILLER APARTMENTS

AC HOTELS MARRIOTT

PROPOSED MIXED-USE

RUSE BREWING
The Yard WILSHIRE BAR
OnPoint COMMUNITY CREDIT UNION

HOTEL INDIGO AN IHG HOTEL
15 GOLDEN RESTAURANT
El Gaucho
Evoke Winery

THE WATERFRONT VANCOUVER PARKING CENTER

STACK 571 BOUTIQUE BOTTLING
BRIAN CARTER CELLARS
Amavi Cellars
PUPPER BROS. WINERY
BARNARD GRIFFIN

PEOPLE'S COMMUNITY
Orangetheory FITNESS
charles SCHWAB
AIRFIELD

DOSALAS
WildFin

Marechal Winery
Waterfront TAPHOUSE
WING AND MARTINI BAR BISTRO

THE SPRINGS LIVING AT THE WATERFRONT

THE COLUMBIA AT THE WATERFRONT APARTMENTS

BROADSTONE CLARO APARTMENTS

BROADSTONE RIVA RESIDENTIAL

PROPOSED RESIDENTIAL

WATERFRONT RETAIL

THE WATERFRONT VANCOUVER PARKING CENTER

- BARNARD GRIFFIN
- Amavi
- STACK 571
- VALO
- BRIAN CARTER CELLARS
- The Yard
- OnPoint
- RUSE BREWING

- Marshall
- Twigs
- Waterfront TAPHOUSE

- WildFin
- DOSALAS
- Orangetheory FITNESS
- PEOPLE'S COMMUNITY
- charles SCHWAB

- AIRFIELD
- HOTEL INDIGO
- El Gaucho
- 13 COINS
- Evoke Winery

- HIGH-RISE RESIDENTIAL UNDER CONSTRUCTION
- PROPOSED MIXED-USE
- PROPOSED MIXED-USE