

LAKE VIEW VILLAGE

310 N State Street | Lake Oswego, OR 97035



FOR LEASE: 1,736 - 4,685 Square Feet

www.cbre.us/portland

CBRE

LAKE VIEW VILLAGE

310 N State Street | Lake Oswego, OR 97035

O V E R V I E W

Office and Medical Space Available

Located right in the heart of downtown Lake Oswego, Lake View Village is home to highly-regarded national and local shopping retailers. The Farmer's Market, art exhibitions and jazz concerts, in addition to a number of community events, are held year round.

Completed in 2003, Lake View Village is the prime location for many 4-star dining experiences such as Five spice Seafood + Wine Bar, Holy Taco, Manzana Rotisserie Grill and St. Honore' Boulangerie.

Covered parking, convenient public transportation stops and available signage are just a few of the elements offered.

- \$35.00/RSF NNN (NNN \$15.66)
- Beautifully finished offices with plenty of light
- Large open areas
- Three interior private offices
- Covered parking is available
- Seasonal farmer's market
- Venue for concerts, art attractions and community events that are held year round
- High-end medical and professional services
- Adjacent to Millennium Park Plaza
- Spectacular views of Mount Hood and the lake



LAKE VIEW VILLAGE

310 N State Street | Lake Oswego, OR 97035



RESTAURANTS

Bamboo Sushi
Chuckie Pies
Domaine Serene Wine Lounge
Five Spice
Genini Bar & Grill
Holy Taco
LO Ice Creamery & Restaurant
Manzana Rotisserie Grill
Pizzeria Sul Lago
Salt & Straw
St. Honore' Bakery
Tada Sushi Studio
Tucci Restaurant

COFFEE

Peet's Coffee
Starbucks

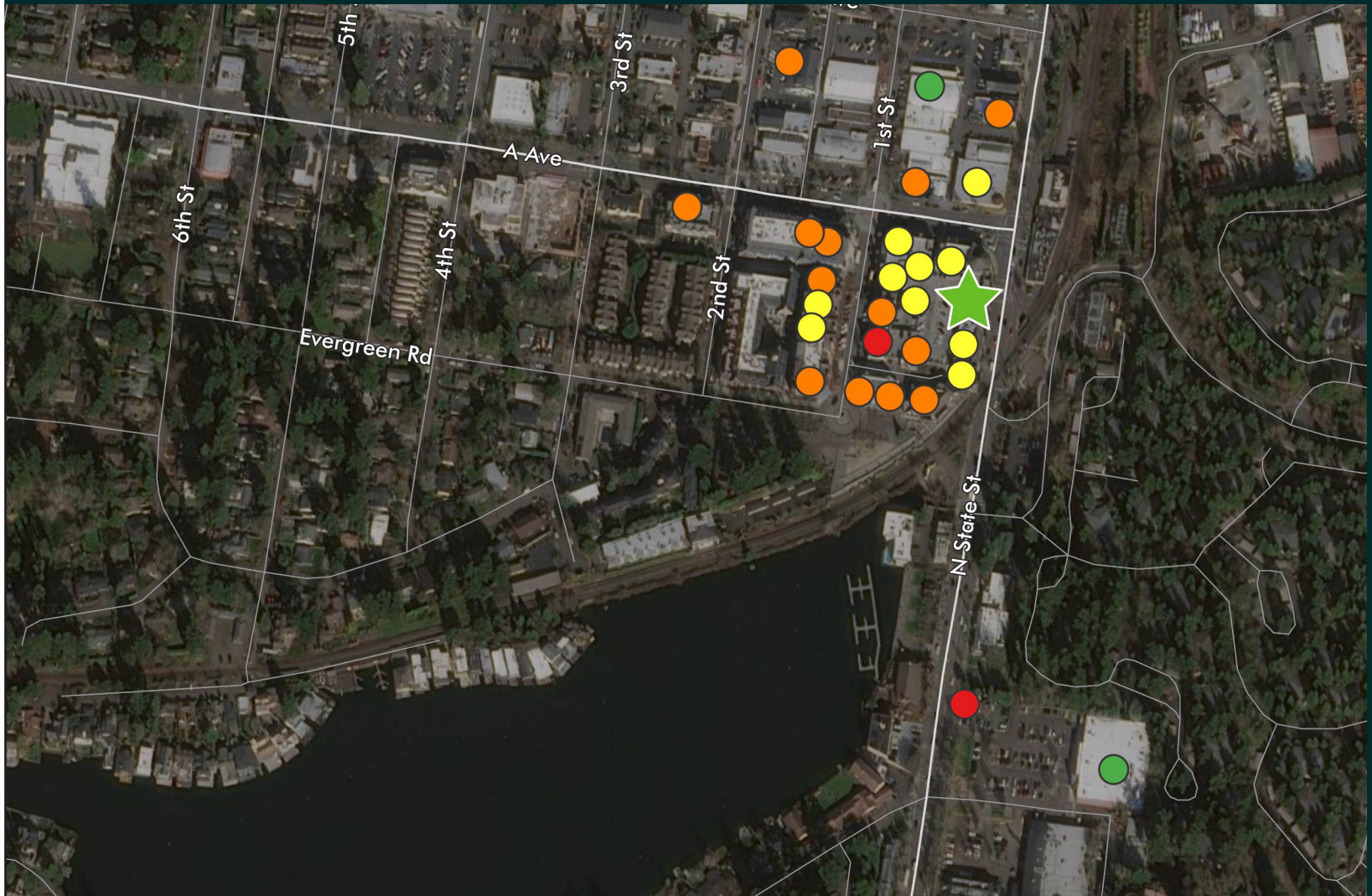
RETAIL

Adorn
Anna's Bridal Boutique
Chicos
Dream Cloud
Grapevine Boutique
Kassab Jewelers
Lucky Me
Lucky Me
Mapel Boutique
Wishbone Home & Design

GROCERY

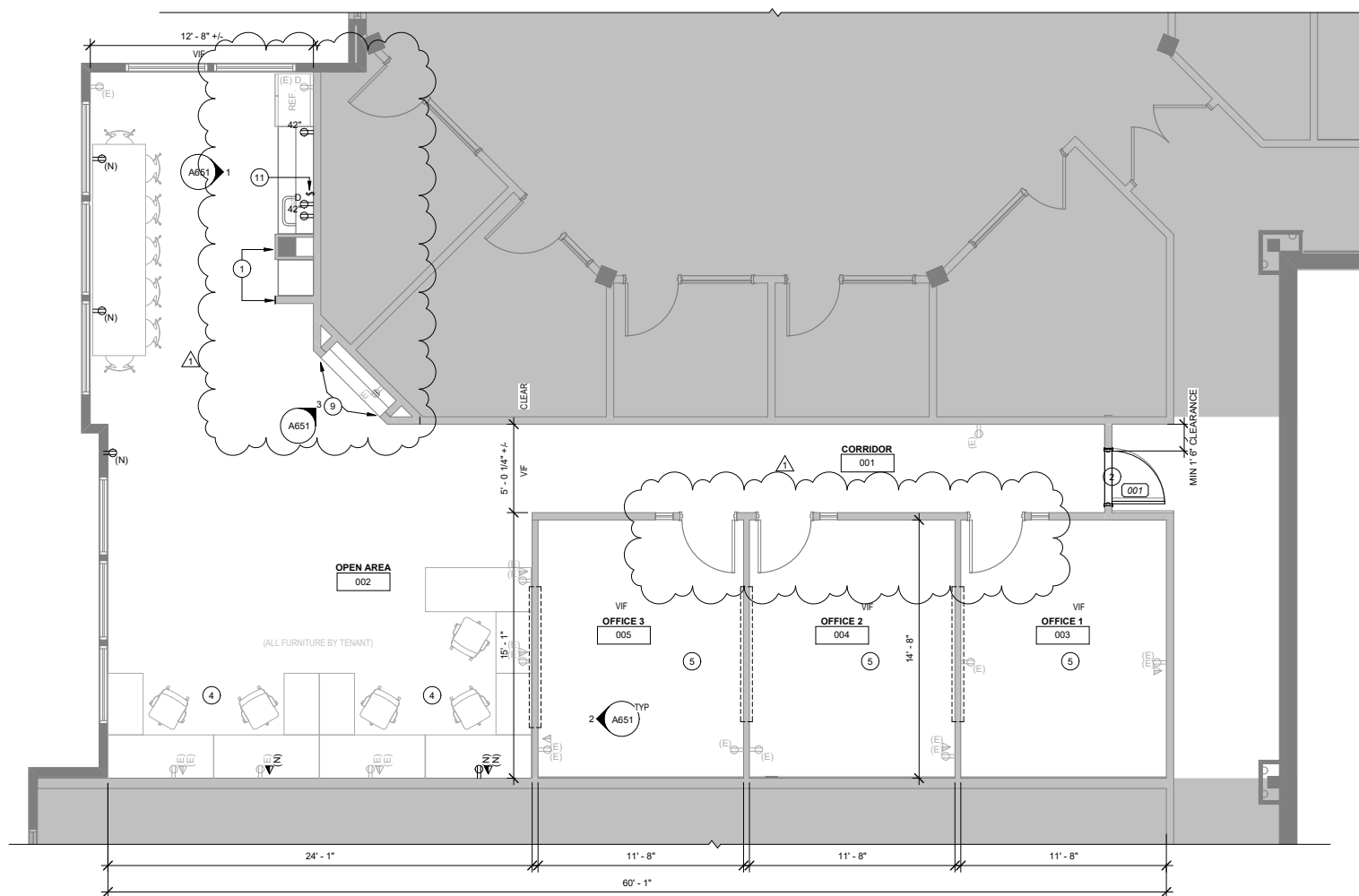
Rite Aid
Whole Foods

NEARBY AMENITIES



A V A I L A B I L I T Y

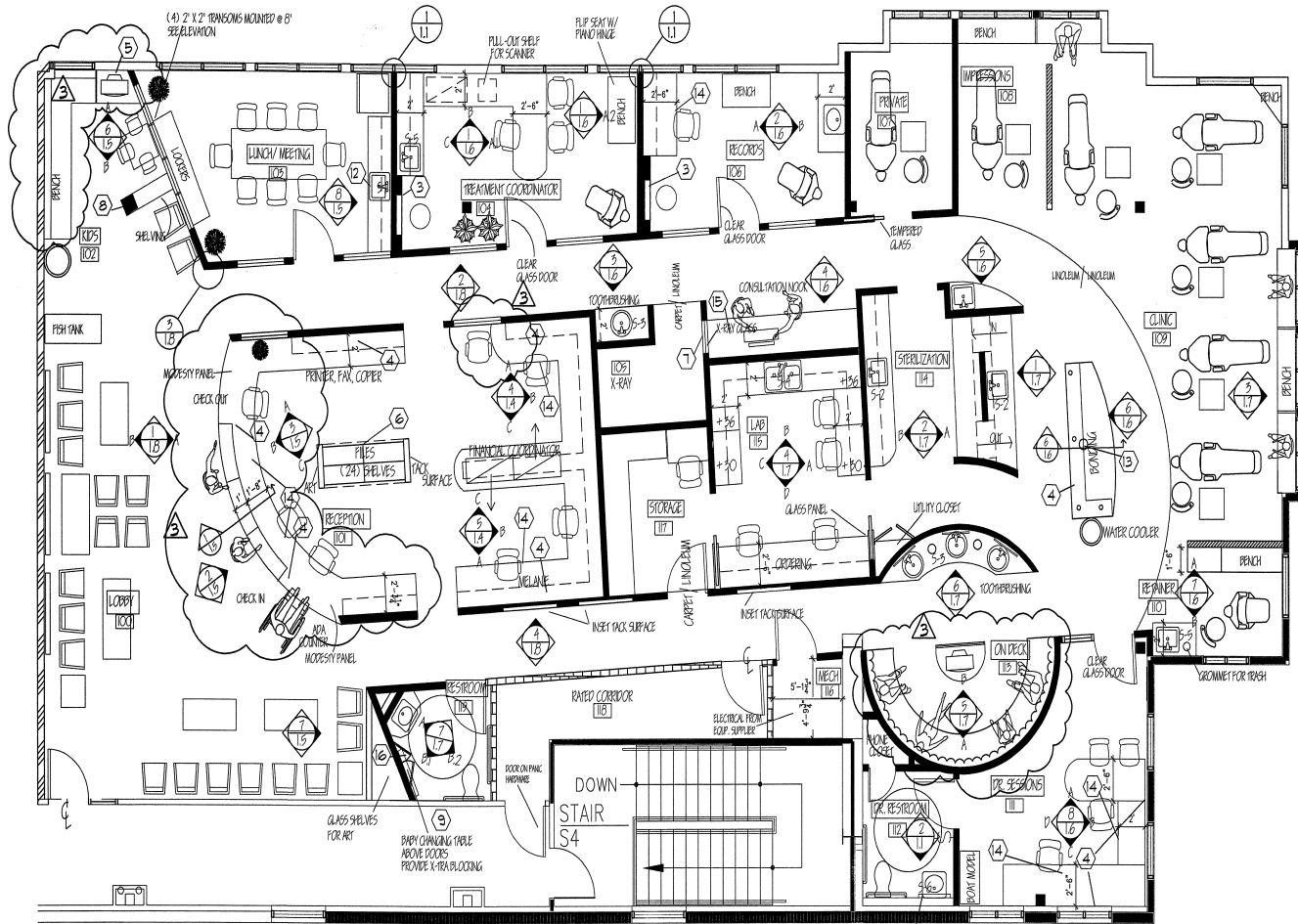
SUITE 218



Suite	Size/SF	Rates
218	1,736	\$35.00 - RSF NNN (NNN \$15.66)

AVAILABILITY

SUITE 302 - MEDICAL SPACE



Suite	Size/SF	Rates
302	4,685	\$35.00 - RSF NNN (NNN \$15.66)

LAKE VIEW VILLAGE

310 N State Street | Lake Oswego, OR 97035



JENNIFER MEDAK

First Vice President

+1 503 221 4853

jennifer.medak@cbre.com

Broker is licensed in OR

CBRE, INC.

1300 SW Fifth Avenue

35th Floor

Portland, OR 97201

CBRE

© 2023 CBRE, Inc. All rights reserved. This information has been obtained from sources believed reliable, but has not been verified for accuracy or completeness. You should conduct a careful, independent investigation of the property and verify all information. Any reliance on this information is solely at your own risk.

CBRE and the CBRE logo are service marks of CBRE, Inc. All other marks displayed on this document are the property of their respective owners, and the use of such logos does not imply any affiliation with or endorsement of CBRE.

www.cbre.us/portland

