



PRIME RESTAURANT SPACE WITH BEAUTIFUL WATER VIEWS



14550 SW MURRAY SCHOLLS DRIVE, BEAVERTON
AVAILABLE NOW - APPROX 5,955 SF

The Town Center sits at the busy corner of Southwest Scholls Ferry Road and Murray Boulevard with close proximity to mass transit and westside arterials and freeways.



MURRAY SCHOLLS
T O W N C E N T E R

Murray Scholls Town Center is one of the most diverse mixed-use development destinations in the Portland, OR metropolitan area. Murray Scholls Town Center features numerous highly-regarded restaurants including Café Murrayhill and Pizzicato. In addition, Murray Scholls Town Center is home to numerous national and local businesses including 24 Hour Fitness, Beaverton City Library, and Kaiser Permanente Murrayhill.

Murray Scholls Town Center is less than a mile from the affluent communities of Tigard’s Bull Mountain and Beaverton’s Murrayhill, one of the desirable demographic regions in the Portland, OR area.

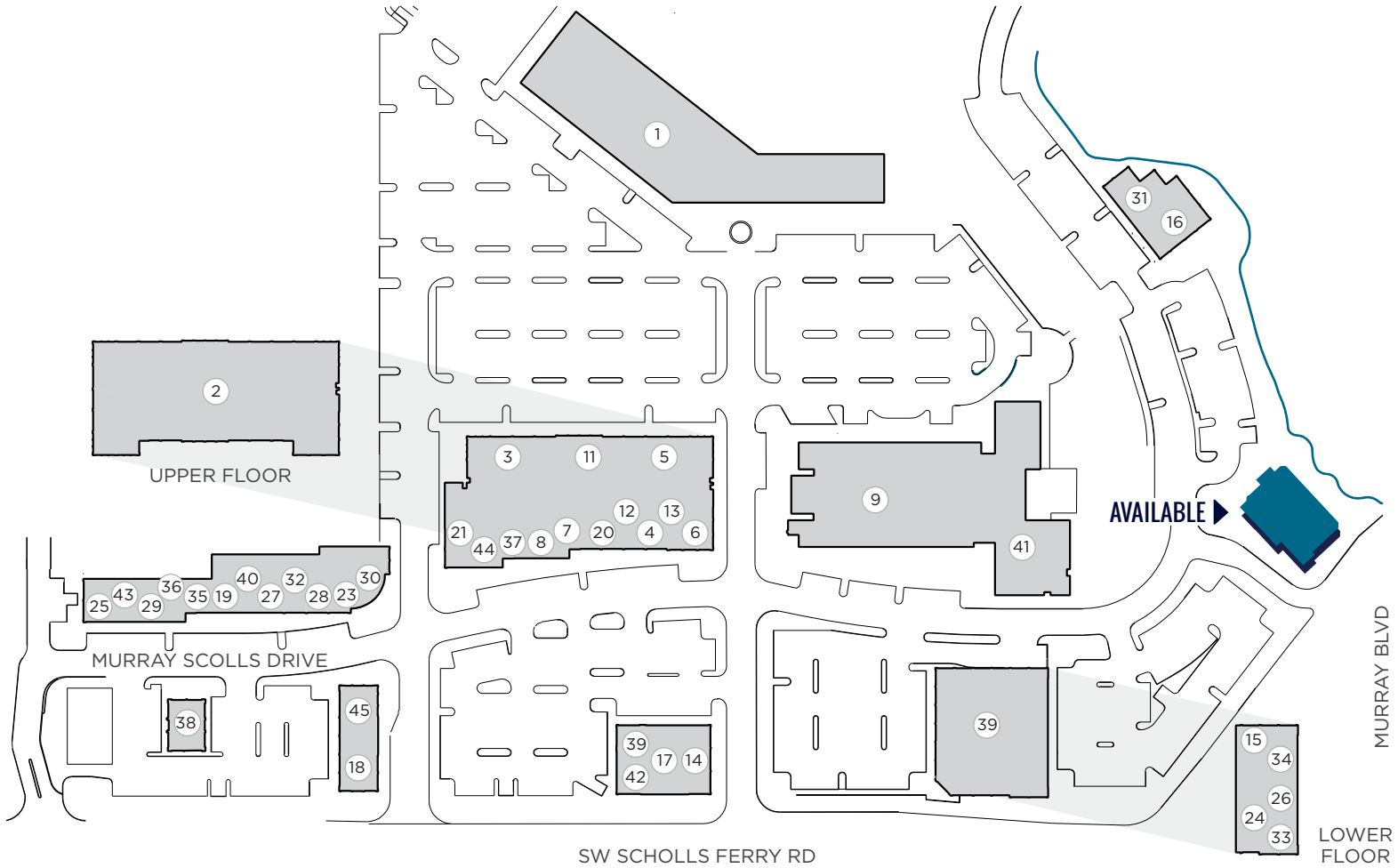
CO-TENANCY:

- STARBUCKS
- 24 HOUR FITNESS
- WALGREENS

SPACE FEATURES:

- HIGH CEILINGS
- ABUNDANT FREE PARKING

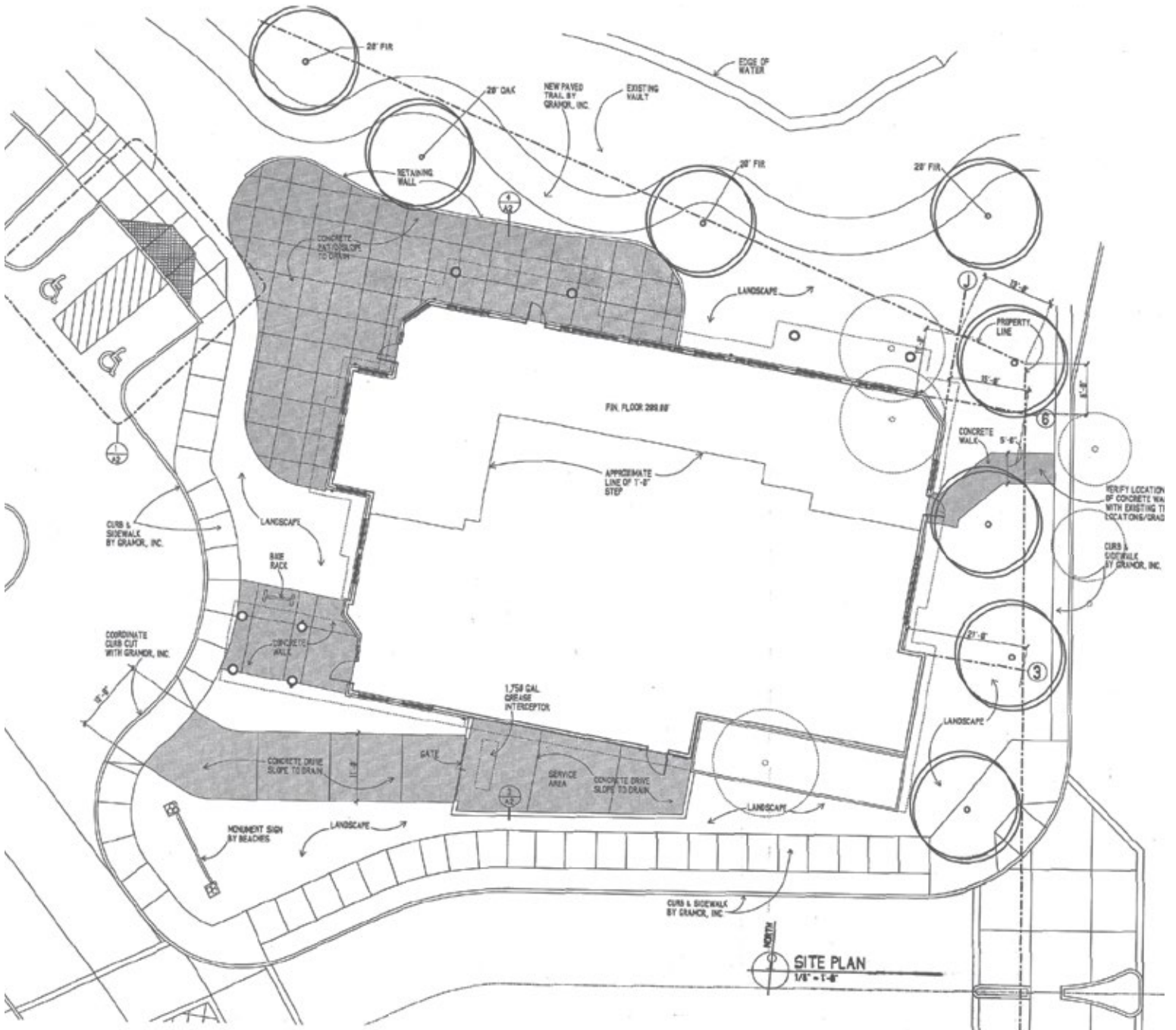
CO-TENANCY



- 3. SCHOLLS FAMILY CARE
- 4. CABINET CURES
- 5. BEHIND THE SMILE
- 8. US WORLD TAEKWONDO
- 11. BEAVERTON ORTHODONTICS
- 17. DICKEY'S BARBECUE PIT
- 18. BANNER BANK
- 19. BODY & BRAIN YOGA • TAICHI
- 20. BIG FROG CUSTOM TSHIRTS
- 23. HOT PLATE ASIAN CUISINE
- 24. SPORTS CLIPS
- 25. MURRAY SCHOLLS FAMILY DENTAL
- 26. MURRAY SCHOLLS VISION CENTER
- 27. COOKIE CUTTERS
- 31. MURRAYHILL DENTAL
- 32. OASIS LEBANISE CUISINE
- 34. THE JOINT CHIROPRACTIC
- 36. ZEN NAIL SALON
- 37. TUTORING CLUB
- 40. PALM BEACH TAN
- 41. BEAVERTON CITY LIBRARY
- 42. MURRAY SCHOLLS LIQUOR
- 43. LAUREN CLEANERS
- 44. JUAN COLORADO
- 45. SUSHI BOAT

14550 SW MURRAY SCHOLLS DRIVE, BEAVERTON

AVAILABLE NOW - APPROX 5,955 SF



THE INFORMATION CONTAINED HEREIN HAS BEEN OBTAINED FROM SOURCES WE DEEM RELIABLE. WE CANNOT, HOWEVER, GUARANTEE ITS ACCURACY.