

Photos: Retail complex under construction in Lake Oswego

By: [Sam Tenney](#) in [News](#), [photo slideshows](#) November 14, 2014 4:30 pm

[Kruse Village](#), a retail /restaurant complex, is being built on a 5-acre lot in Lake Oswego by **Gramor Development**. General contractor **Todd Construction** is building the **Mackenzie**-designed project, which includes over 60,000 square feet of space, over half of which has already been leased. Six buildings are being constructed around a central parking area and an open-air pavilion which will house Parsons Farms, a local produce seller which had a stand on the site before construction began. There will also be a pair of wooden pedestrian bridges, walkway systems and natural riparian areas. Work on the project began this past summer and is slated for completion next month, at which point tenant improvements will begin. The center's grand opening will be held next April.

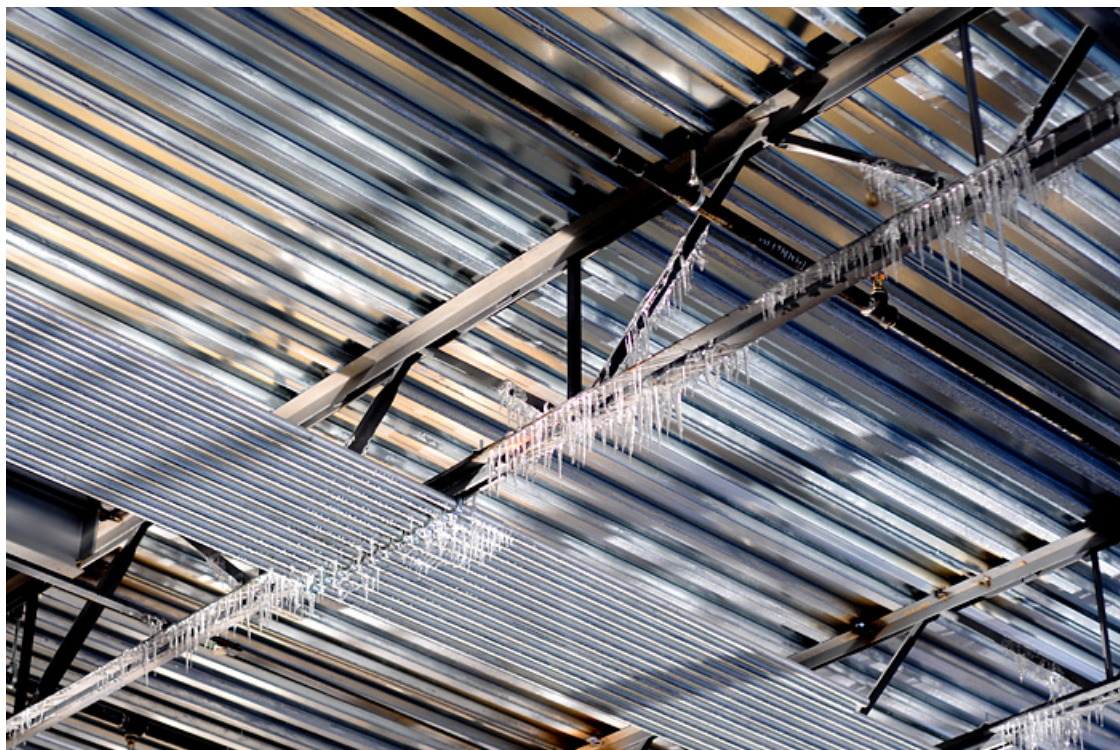


Lee Willard, a carpenter with Cascade Acoustics and member of Local 146, takes a measurement while installing steel stud framing on a building at the Kruse Village development in Lake Oswego. The 60,000-square-foot retail/commercial project is being built for Gramor Development by Todd Construction.





A.J. Winter, an employee of All City Glass of Oregon, installs a storefront window frame.





Cascade Acoustics employee Vicente Gonzalez, a second-term apprentice carpenter with Local 146, hands a steel stud to a waiting colleague.



Kruse Village's six structures are being built with different cladding materials to give each one a unique identity.



Mike Reich, a carpenter with Cascade Acoustics and member of Local 146, installs steel stud framing on a building at Kruse Village.

Read more: <http://djcoregon.com/news/2014/11/14/photos-retail-complex-under-construction-in-lake-oswego/#ixzz3J6lIdIAP>